

STATE WHEN ORDERING

COW = mm
 CL = mm
 SBL = mm
 LAP = mm
 G = mm
 TDW = mm
 Door weight = kg

Surface treatment

Silver anodized
 Special anodized
 RAL
 Special powder coating

	Alt.1	Alt.2		
Overlap (min. 20mm)	LAP	LAP	x2 =
Finger protection (min. 25mm)	E	E	x2 =
Finger protection (min. 25mm)	-	F	x4 =
Jamb width (min. 30mm)	J	J	x2 =
Leading edge width	-	P	x4 =
Sum of above			Sum =	

Alt.1 COW = K	K=	
Alt.2 COW + 4P + 4F = K	K=	(K + 4LAP - G) / 4 = TDW TDW =
Cover length CL	(CL - Sum) / 1,5 = = COW max.	
Door travel COW	(COW x1,5) + Sum = = CL min.	

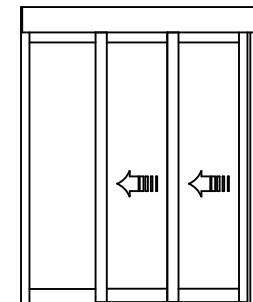
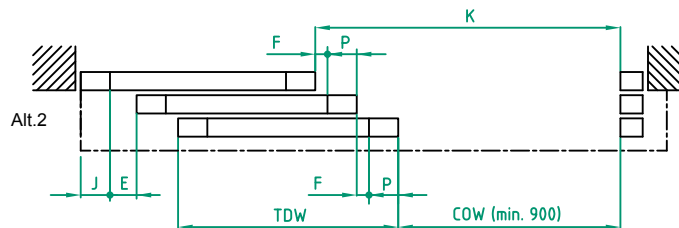
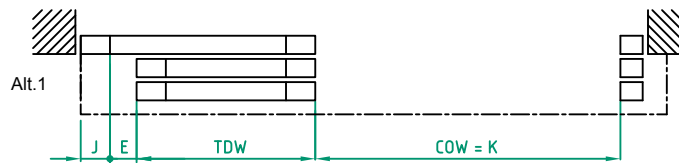
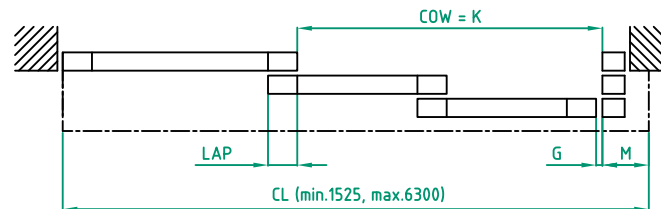
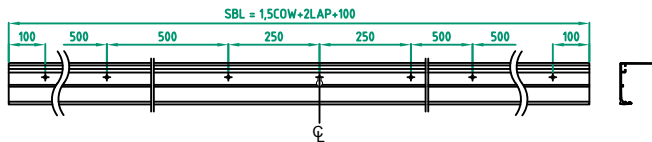
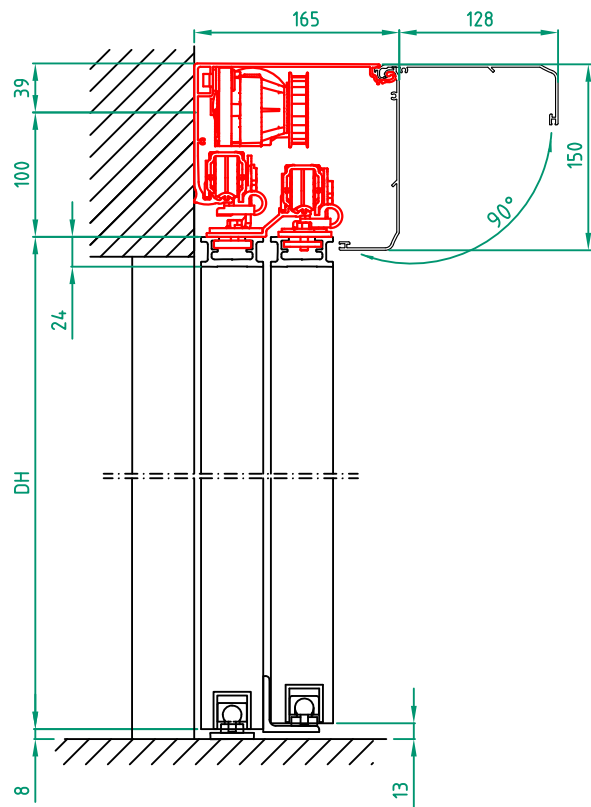
©ASSA ABLOY Entrance Systems AB, 2018
 Technical data subject to change without notice.

Customer: _____
 Door id: _____
 Project No: _____

Ref: _____
 Date: _____
 Sign: _____

Sliding door operator
 ASSA ABLOY SL520-2
 Art. No. 1009282

ASSA ABLOY
 4.0 1010710-EI



STATE WHEN ORDERING

COW = mm
 CL = mm
 SBL = mm
 LAP = mm
 G = mm
 TDW = mm
 Door weight = kg

Surface treatment

Silver anodized
 Special anodized
 RAL
 Special powder coating

	Alt.1	Alt.2	
Overlap (min. 20mm)	LAP	LAP
Finger protection (min. 25mm)	E	E
Finger protection (min. 25mm)	-	Fx2=
Jamb width (min. 30mm)	J	J
Cover overlap (min. 100mm)	M	M
Leading edge width	-	Px2=
Sum of above	Sum =	

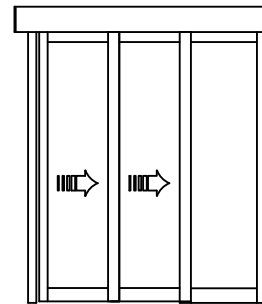
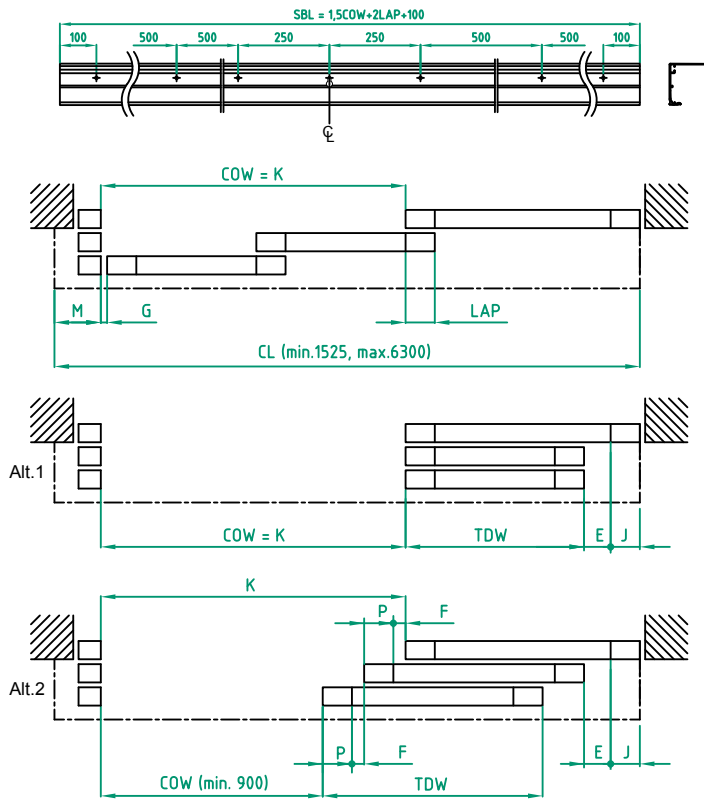
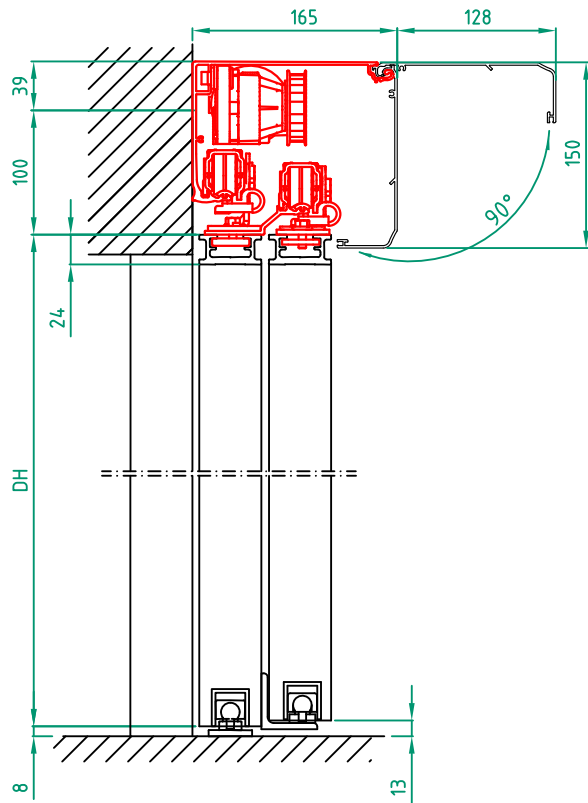
Alt.1 COW = K	K=	(K + 2LAP - G) / 2 = TDW	TDW =	
Alt.2 COW + 2P + 2F = K	K=				
Cover length CL	(CL	- Sum) / 1,5 = = COW max.
Door travel COW	(COW	x1,5) + Sum	= = CL min.

Customer: _____
 Door id: _____
 Project No: _____

Ref: _____
 Date: _____
 Sign: _____

Sliding door operator
 ASSA ABLOY SL520-L
 Art. No. 1009282

ASSA ABLOY
 4.0 1010710-EI



STATE WHEN ORDERING

COW = mm
 CL = mm
 SBL = mm
 LAP = mm
 G = mm
 TDW = mm
 Door weight = kg

Surface treatment

Silver anodized
 Special anodized
 RAL
 Special powder coating

	Alt.1	Alt.2	
Overlap (min. 20mm)	LAP	LAP
Finger protection (min. 25mm)	E	E
Finger protection (min. 25mm)	-	Fx2=
Jamb width (min. 30mm)	J	J
Cover overlap (min. 100mm)	M	M
Leading edge width	-	Px2=
Sum of above	Sum =		

Alt.1 COW = K	K=	
Alt.2 COW + 2P + 2F = K	K=	(K + 2LAP - G) / 2 = TDW TDW =
Cover length CL	(CL - Sum) / 1,5 =	= COW max.
Door travel COW	(COW x1,5) + Sum =	= CL min.

Customer: _____
 Door id: _____
 Project No: _____

Ref: _____
 Date: _____
 Sign: _____

Sliding door operator
 ASSA ABLOY SL520-R
 Art. No. 1009282

ASSA ABLOY

4.0 1010710-EI