

# Modernization kit ASSA ABLOY M Parking guides

ASSA ABLOY

ASSA ABLOY Entrance Systems

The global leader in  
door opening solutions



## Key Benefit



Convenience



Safety

## Parking guides for loading docks

### Backing up a vehicle

Trucks need to back up with the rear of the trailer towards the building. Although this is trained in the truck driver training, it helps if the driver has visual aid.

The trailer must be centered onto the dock leveller with a margin of max 100 mm on either side. In addition, the truck must be right-angled to make sure the leveller lips rests firmly on the trailer bed.

To prevent wrong position of the leveller on the trailer bed, but also to prevent collision damage to the shelter, the parking guides force the truck driver to aim the trailer well on the loading dock.

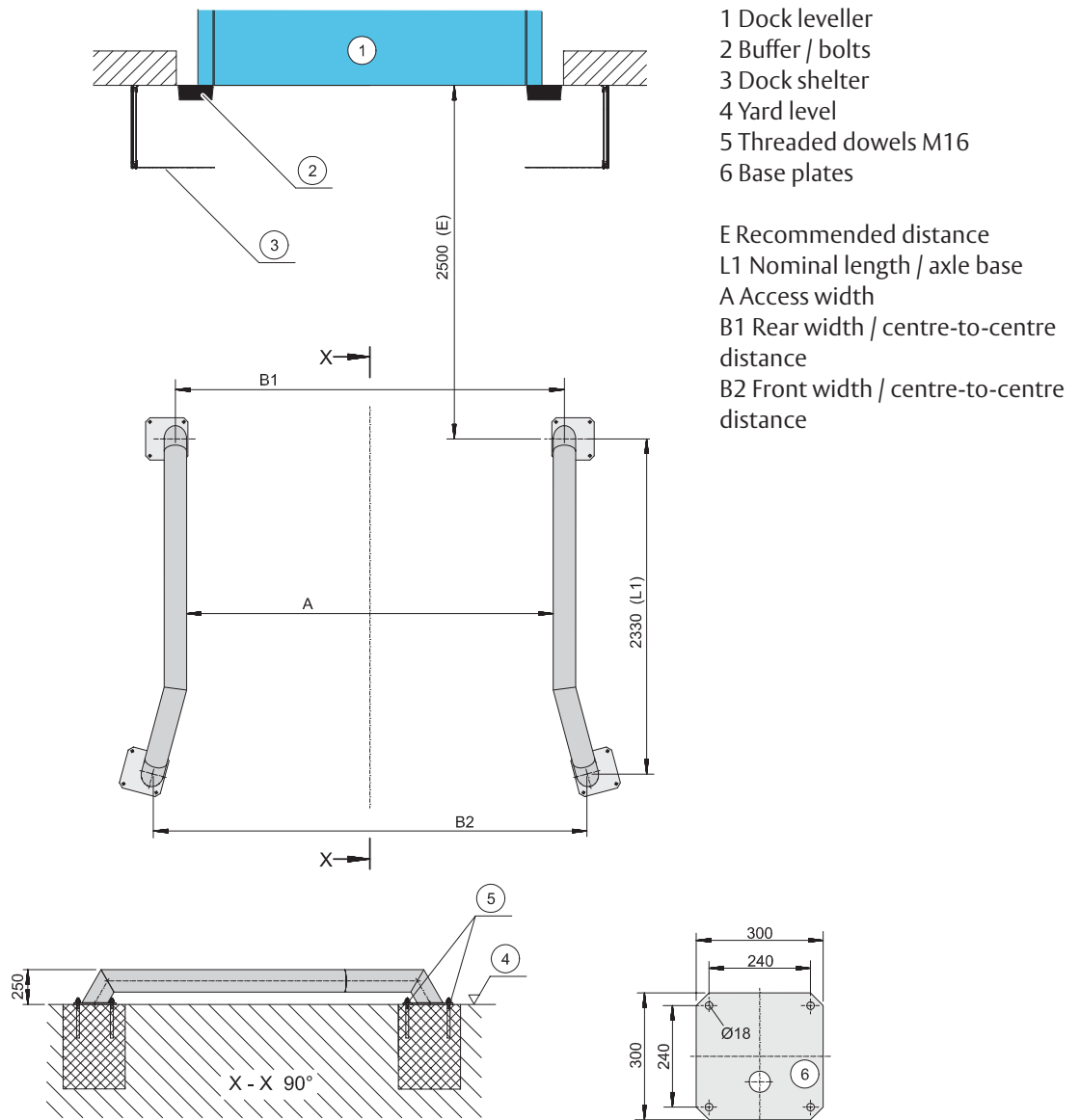
The parking guides also increase safety for personnel walking on street level. A walkway can be appointed beside a loading dock and the parking guides will keep vehicles at a safe distance.

### Bolted installation

Although ASSA ABLOY produces two versions of parking guides, bolted and cast-in, for modernization of an existing loading dock the bolted version is most convenient.

Each parking guide is installed on two plates each with four threaded dowels. This requires relatively simple concrete drilling and putting the parking guide in place.

## Overview



- 1 Dock leveller
- 2 Buffer / bolts
- 3 Dock shelter
- 4 Yard level
- 5 Threaded dowels M16
- 6 Base plates

- E Recommended distance
- L1 Nominal length / axle base
- A Access width
- B1 Rear width / centre-to-centre distance
- B2 Front width / centre-to-centre distance

## Distances

A	B1	B2
2400 mm	2560 mm	2885 mm
2500 mm	2660 mm	2985 mm
2600 mm	2760 mm	3085 mm

## Available kits for ASSA ABLOY M Parking guides

Name	Type	Remarks
Parking guide bolted L+R	Bolted installation. For all loading dock types.	Left and right, including installation material

## Benefits

### Key benefits are:

- Trouble-free parking of the vehicle
- Reduced risk of bad contact between leveller lip and trailer bed
- Prevents collision damage to shelters
- Creates safe walking areas for personnel at loading dock